

# InteriCAD T6

The Ultimate Solution for Professional Interior Design



InteriCAD T6 is a professional business tool for interior/exterior design and furniture industries. With YFCAD's cutting-edge features, realistic 3D renderings and amazing cloud library, we deliver the world-leading tools for you to create stunning designs and shorten your sales cycle in business end.

# What is InteriCAD T6

- \* Started from 1994 with version 1.0
- \* Before 2007: relying on AutoCAD
- \* 2007: launched of T3 version,  
standalone platform of **BtoCAD**
- \* 2010: launch of T5 version
- \* 2013: Grand launch of T6 version

## History of InteriCAD

- \* Interior Designer; Design Company/ Studio
- \* Interior Architect; Architect
- \* Contractor; Builder
- \* Furniture/ Building Materials/ Kitchen & Cabinet Manufacturers and Showrooms



# Design for who?



## Competitive Market

- \* Higher Customization Demand
- \* Design Service
- \* Fast feedback on Design
- \* Presentation

## Advantage

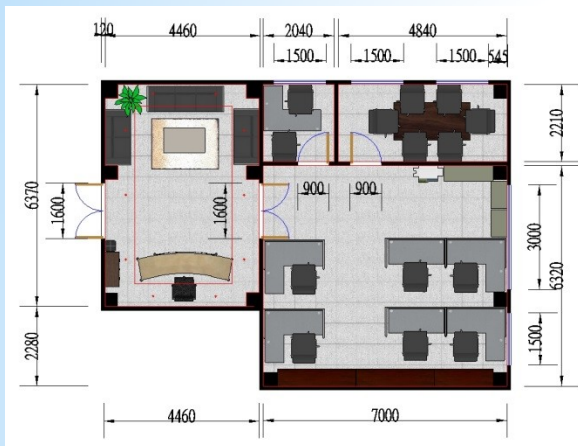
- Propose 3D to your customer
- Instant proposal revision
- Close deal on spot
- Reduce workload
- Various output for presentation

# Why choose InteriCAD T6

- Professional and smart **Design** operation
- Enhance **Communication**, make presentation much easier
- Real Design and real product realize bigger **Business**

## What InteriCAD T6 can do?

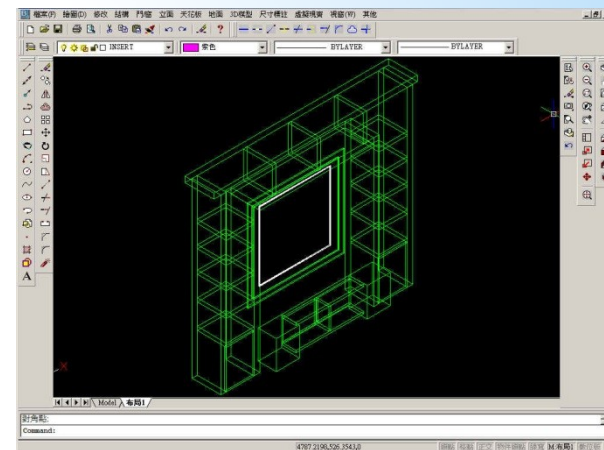
## 1. 2D Design



## 2. 3D Reality



## 3. CAD Modeling



# What InteriCAD T6 can do?

## 4. Kitchen Design



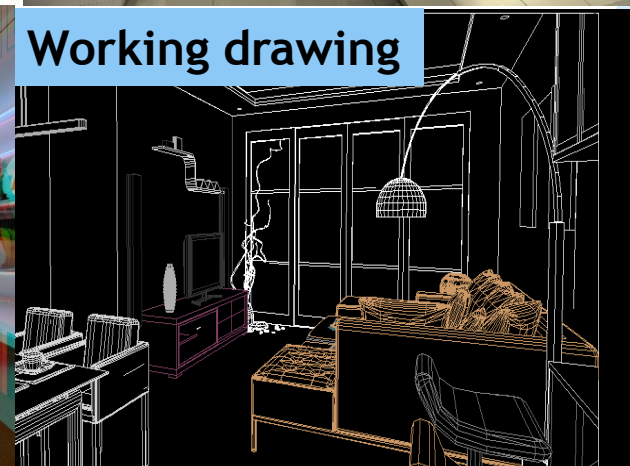
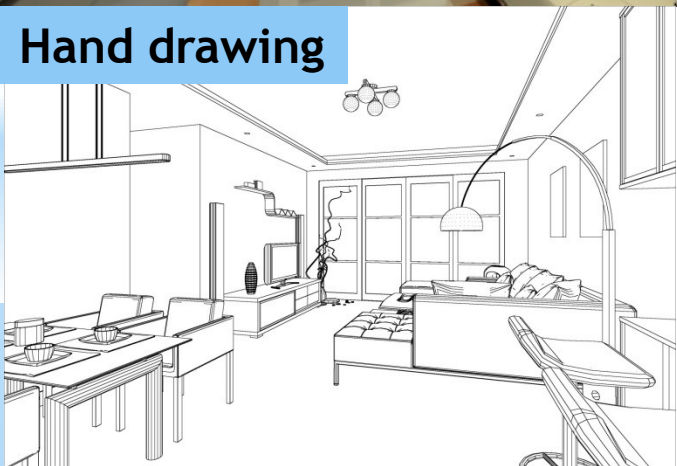
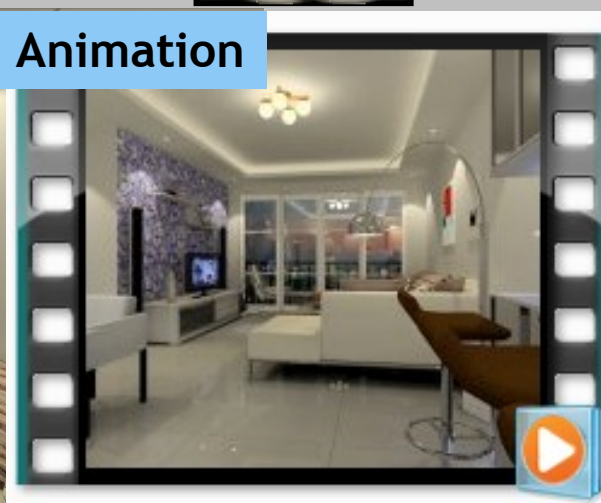
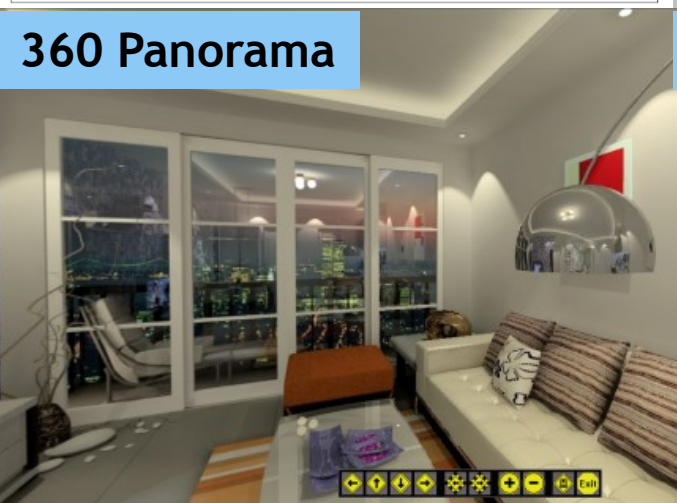
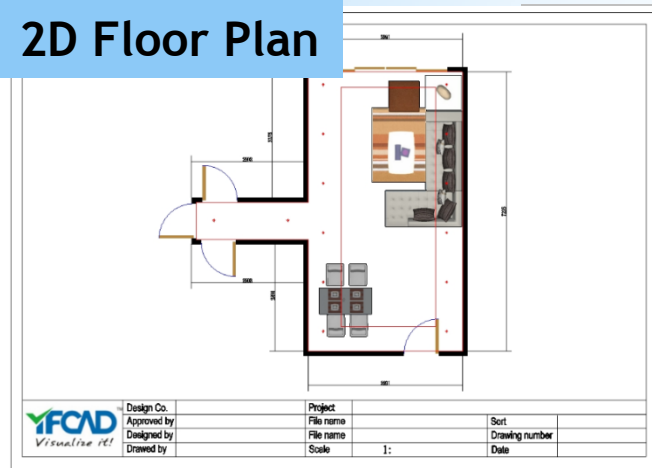
## 5. Flat Panel Design



## 6. Tiling Design









**Flat Panel Design**



**Better Clone Object resource**



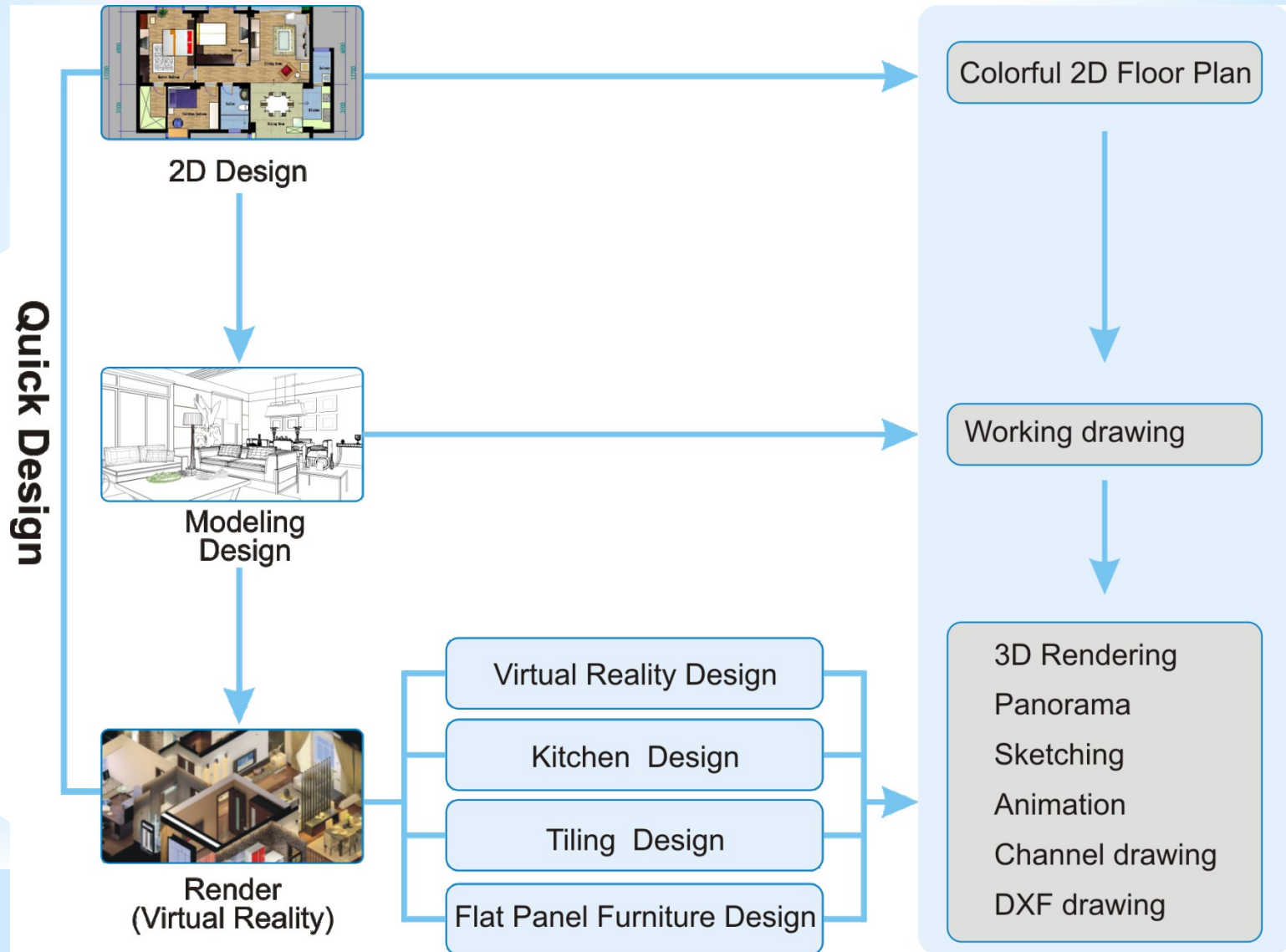
**Massive Built-in Library**



**Online Cloud library**

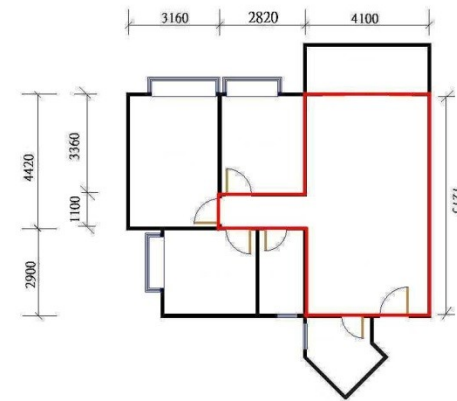
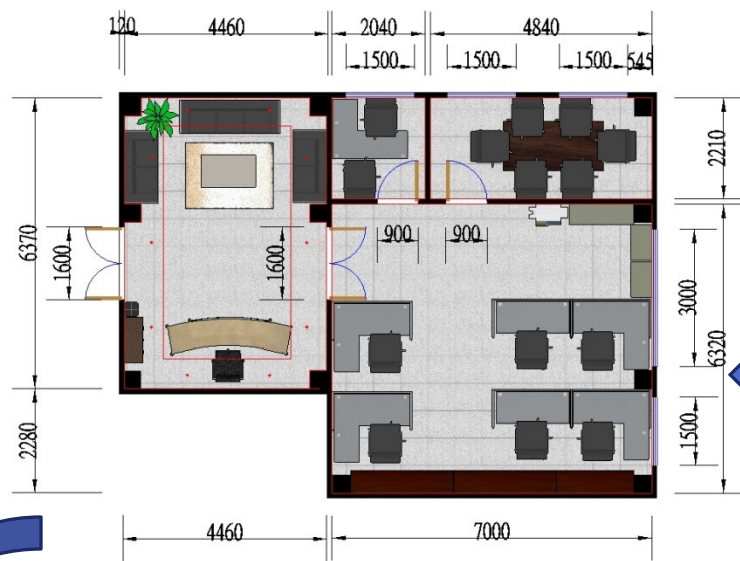
# **What's New in InteriCAD T6**

# InteriCADT6 Workflow





# 2D Design



# Where to get my floor plan?

Developer/Architecture

Internet

Representative:  
Hong Kong

[http://hk.centanet.com/home/Online/FindProperty/MapFindProperty/Transaction/16-year deal/My Profile/Primary focus/Featured Luxury](http://hk.centanet.com/home/Online/FindProperty/MapFindProperty/Transaction/16-year%20deal/MyProfile/Primary%20focus/FeaturedLuxury/)

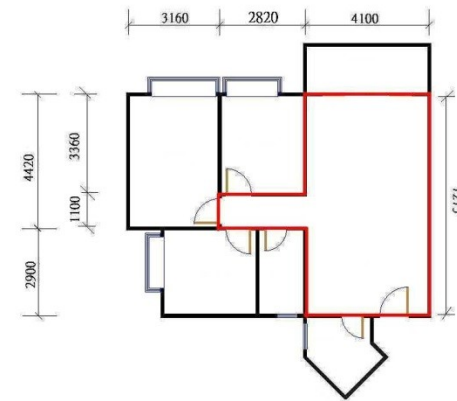
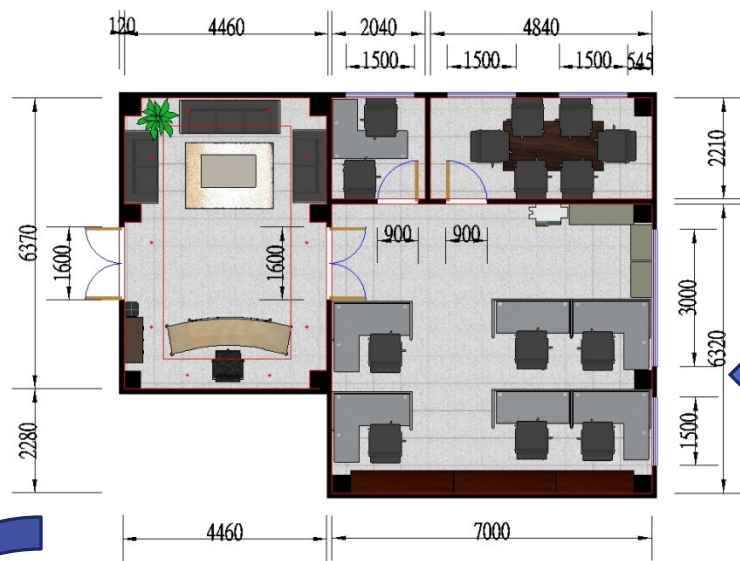
The screenshot shows the HK Centanet website interface. At the top, there's a navigation bar with the Centanet logo and various links. Below this, a search bar is visible. The main content area features a large floor plan of a building, likely a residential complex, with a central courtyard. To the right of the floor plan, there's a table titled 'Last traded units' listing various properties with their addresses, floor levels, room counts, prices, and dates. Below the table, there's a section for 'Centa-City Leading Index CCL' showing a line graph and a current value of 120.95. The website is in Chinese, and the interface includes various navigation tabs and a sidebar with links to different sections.

Address	Floor	Unit	Price	Date
Mandarin House	Low level	Room D (NO. 34)	9500000	2/8
Ho Shun Yee Building Block A	Middle	2 rooms	2480000	1/8
Kam Fung Court	Middle	Room B	3480000	1/8
SHORE 5	Middle	Room G	4210000	31/7
Sereno Verde 1 3	High level	Room E	3300000	31/7
PACIFICA 1 2	High level	A Room	5520000	31/7
Metro Harbour View 2 9	High level	Room G	Rent \$ 17,300	2/8
Bel-Air 6 2	High level	Room B	Rent \$ 34,000	2/8





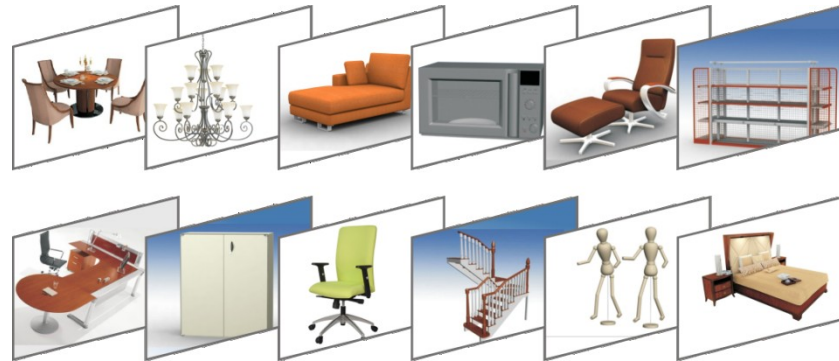
# 2D Design



# Virtual Reality

\*10,000 + 3D models

\*Home Furniture, kitchen & bathroom collection, lamp appliances, office furniture collection, plants & decoration items, etc.



System Library

\*Over **100** global furniture manufacturers

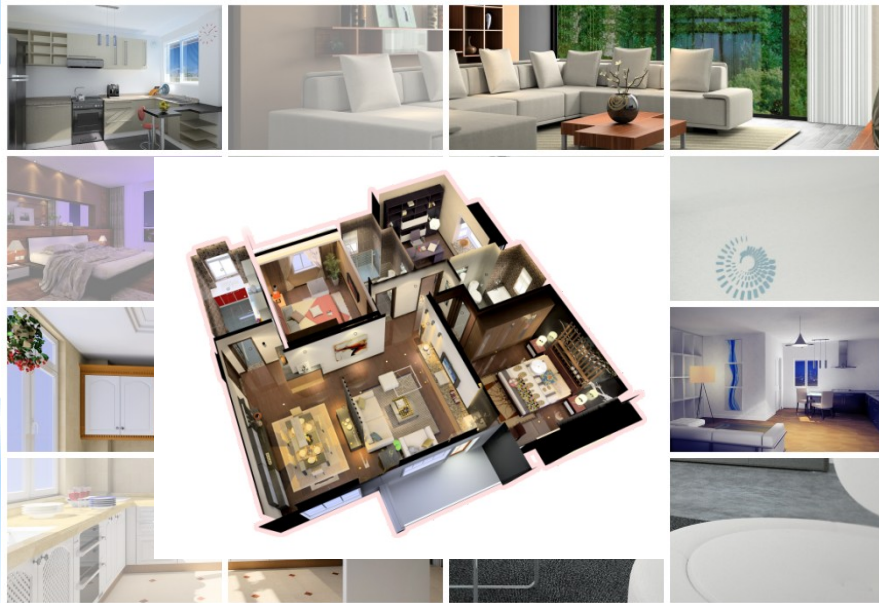
\***8000+** 3D models and material



# Online Cloud Library



- \* Larger resource of design proposals
- \* Flexible design elements available: 3D objects, material, lighting sources.
- \* Leverage your past designs, expedite your work!



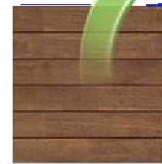
Clone Object

- Easy
- Real-time effect
- Fast
- Photo-realistic



# Material Effect

- Simple drag-and-drop
- easy-use effect setting
- real-time realistic effect





# Material Effect



Bump Effect



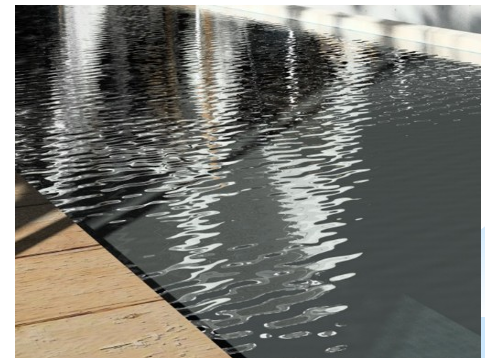
Leather Effect



Metal Effect



Wood Effect



Water Effect

- Simple drag-and-drop
- Ready-use effect setting
- Real-time realistic effect



# Render Effect



*Day & Night*



***Render in 10 mintues by InteriCAD T6***



***Photon render in 10 minutes by InteriCAD T6***



**Render Effect**



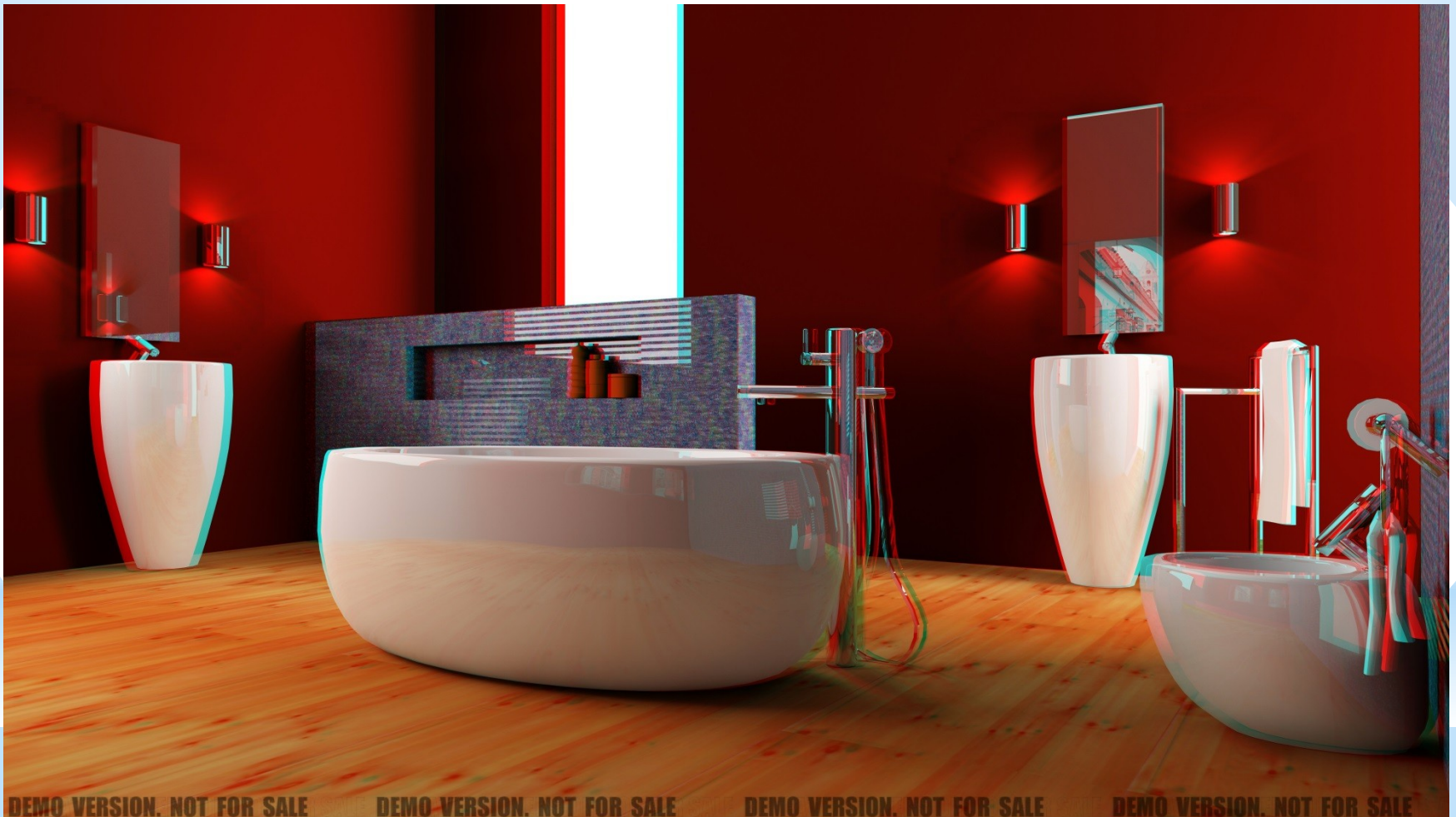
# 9 Rendering Output

## 1. Perspective



# 9 Rendering Output

## 2. 3D Perspective



# 9 Rendering Output

## 3. DWG/DXF



# 9 Rendering Output

## 4. Hand drawing





# 9 Rendering Output

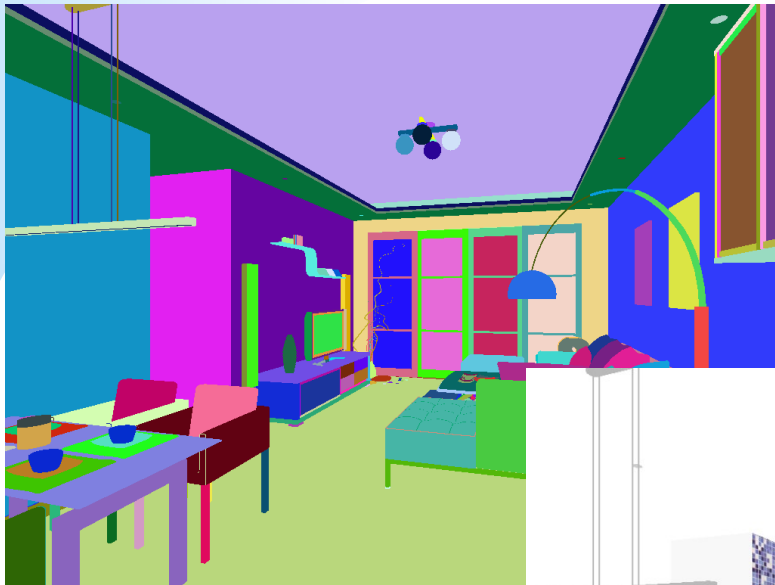
## 5. Photon Rendering



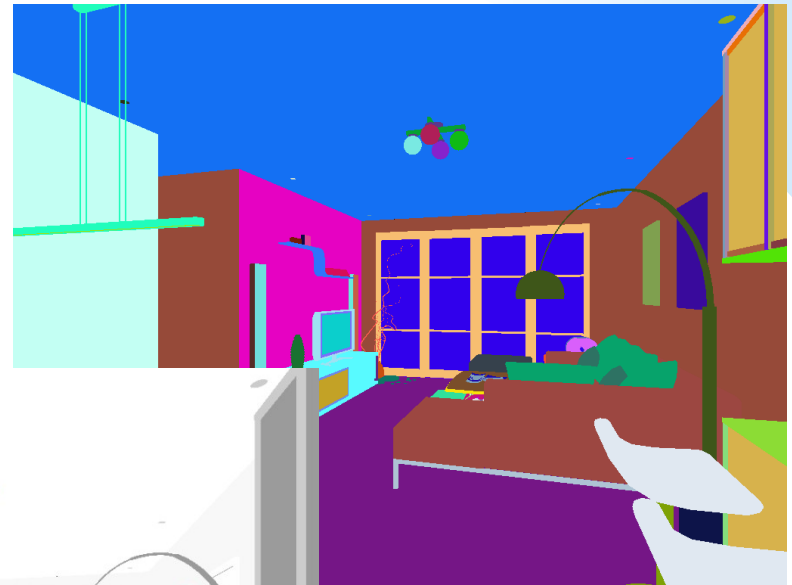


# 9 Rendering Output

## 6. Channel Image



By Surface



By Material



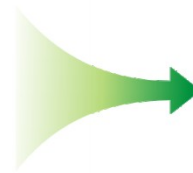
Solid Color with Texture

# 9 Rendering Output

## 7. Panorama

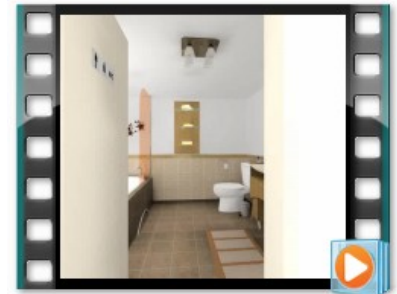
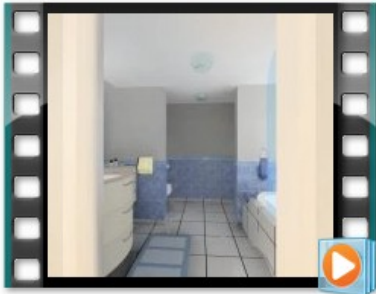


- Present on iPad
- Easy to carry
- 360° Perspective



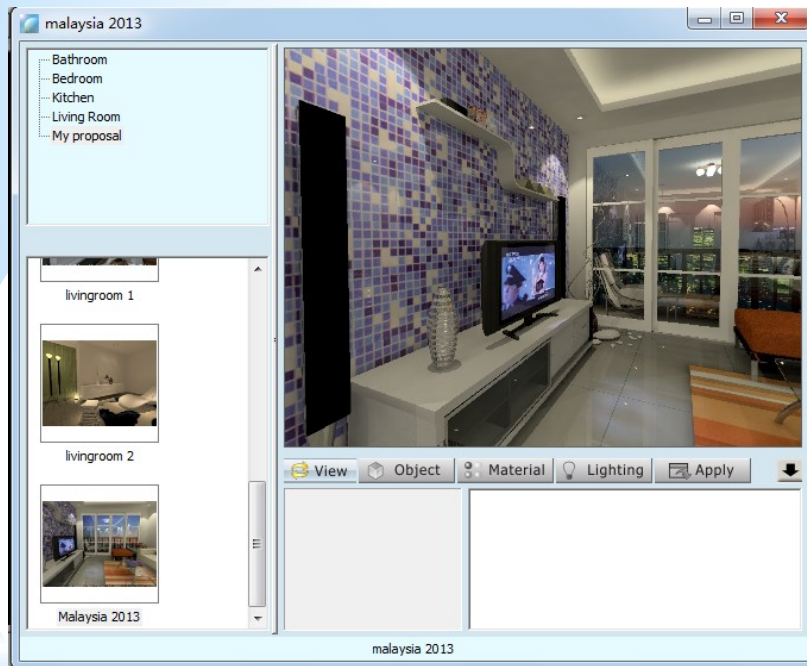
# 9 Rendering Output

## 8. Animation

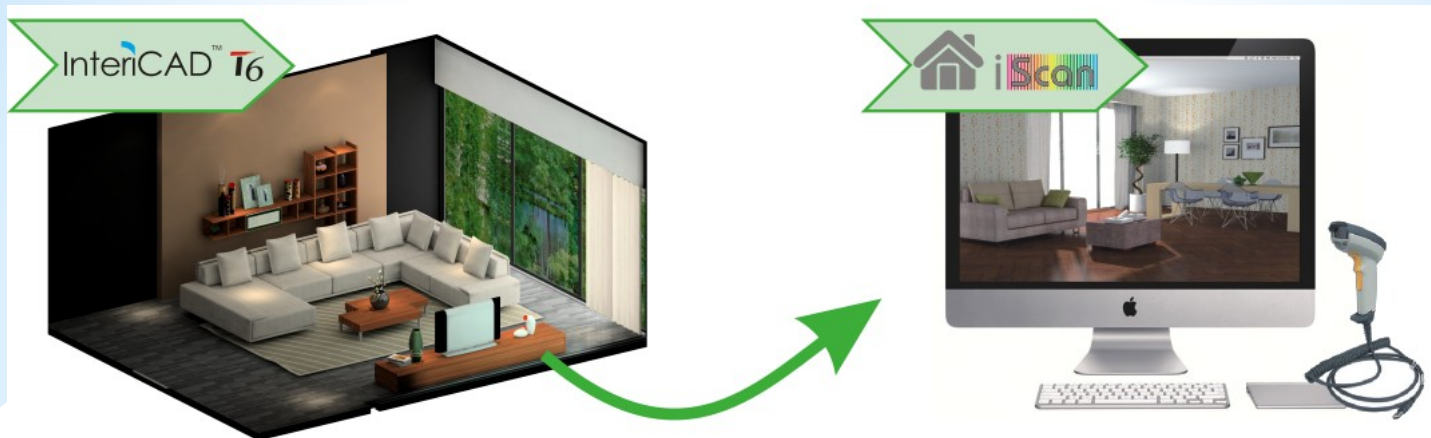


# 9 Rendering Output

## 9. Clone Object Scene







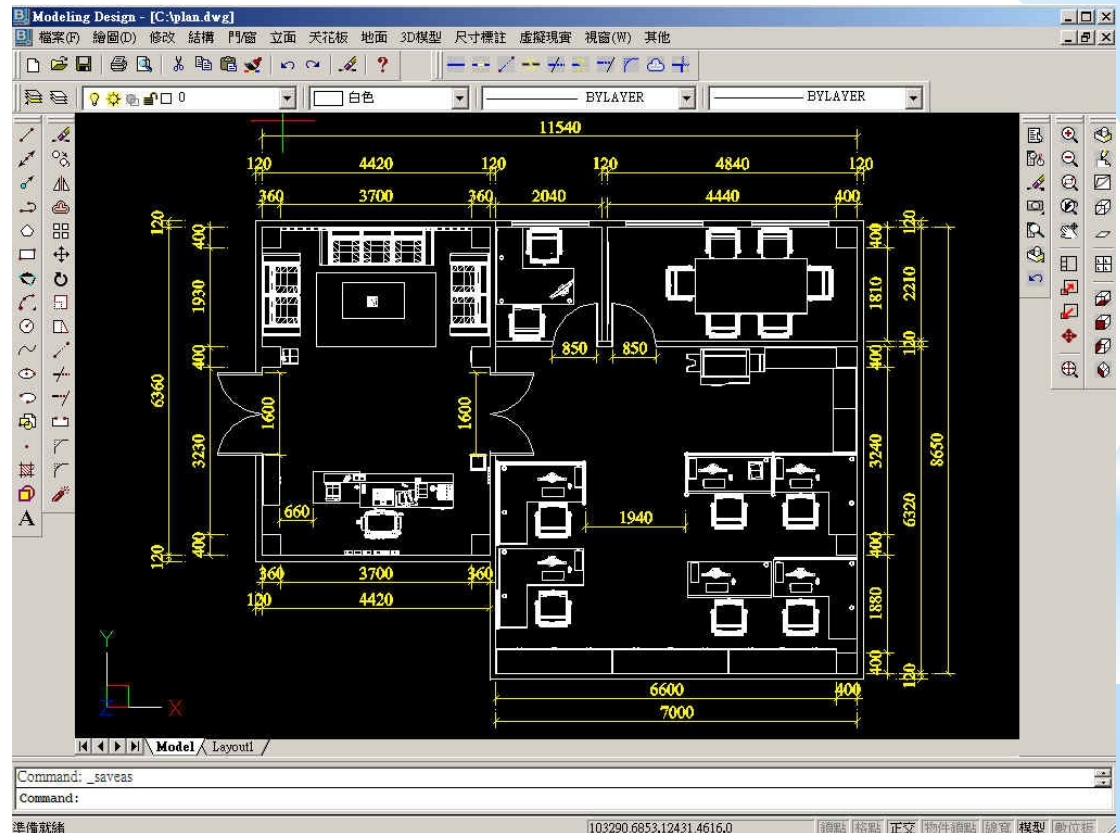
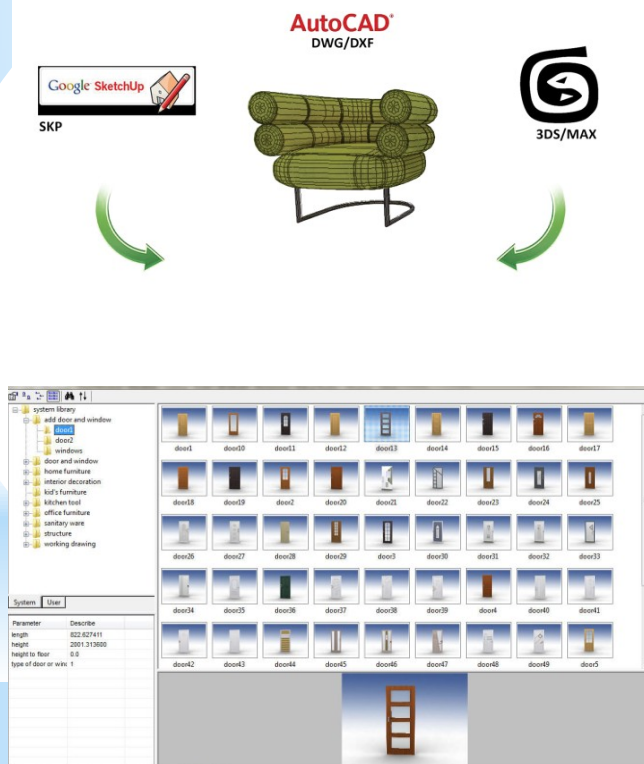
# iScan Presentation



# Design

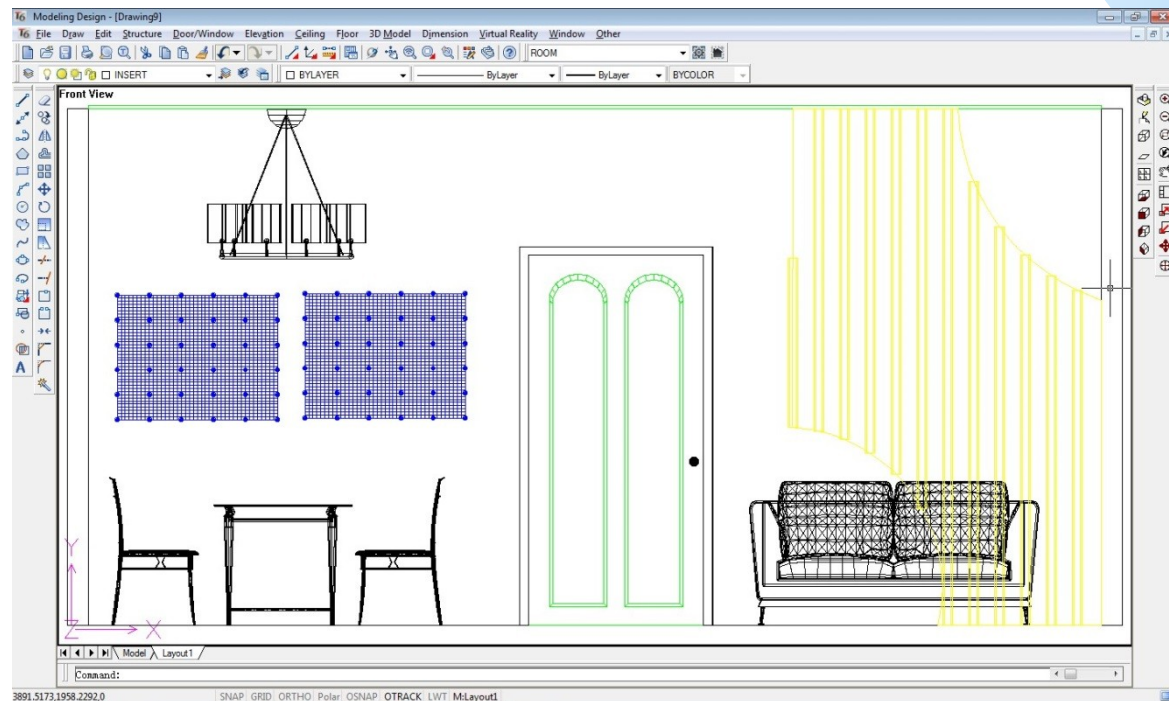
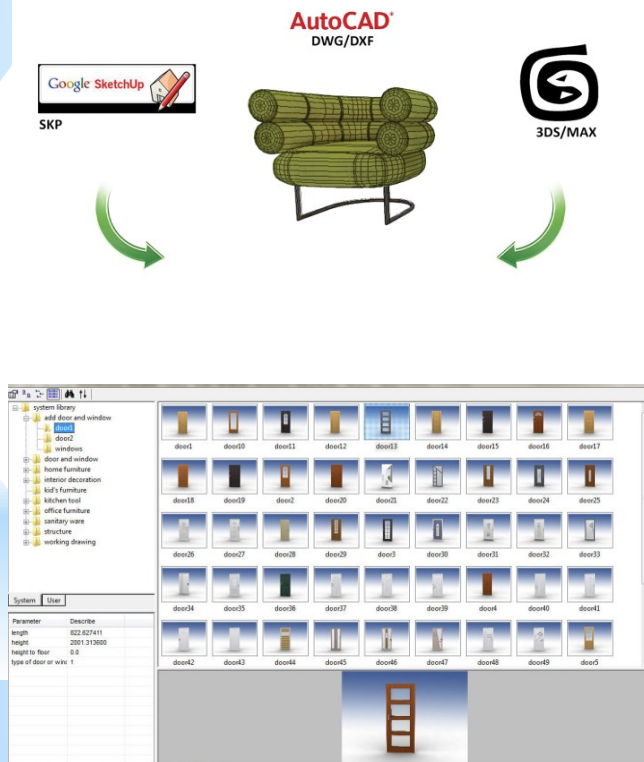
# Modeling

- \* Stand-alone version of BtoCAD
- \* Compatible with Sketchup/ AutoCAD/ 3DMax
- \* Massive model library
- \* Shortcuts specialized for interior design



# Modeling

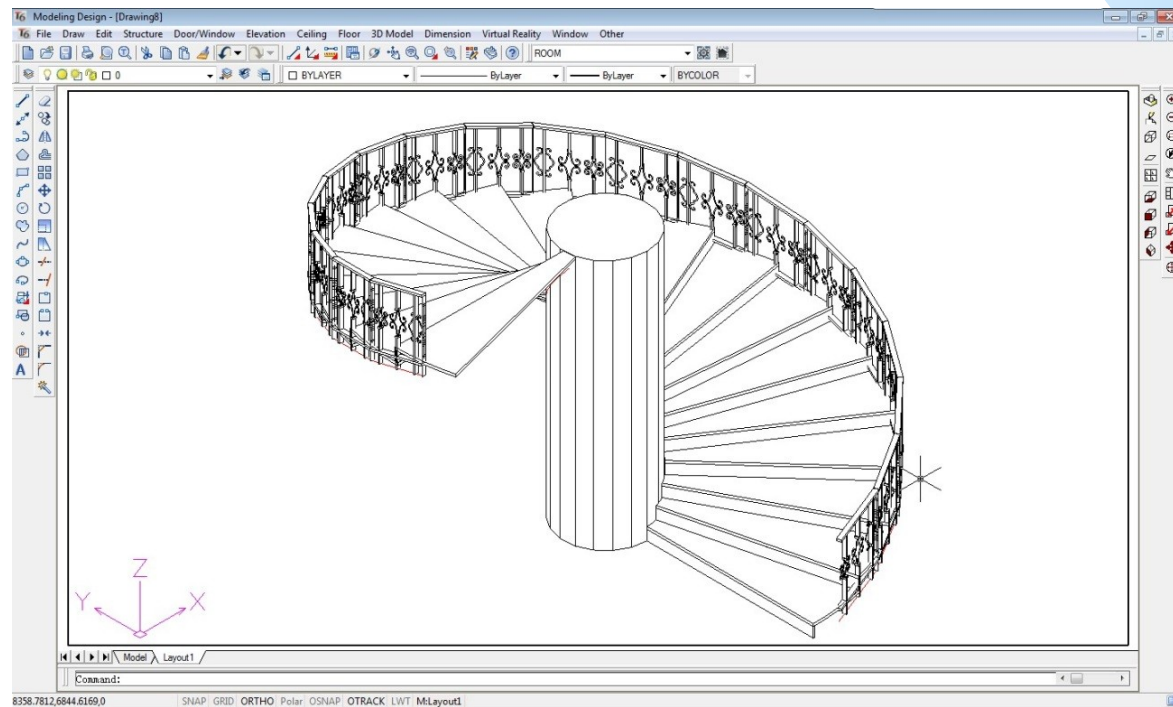
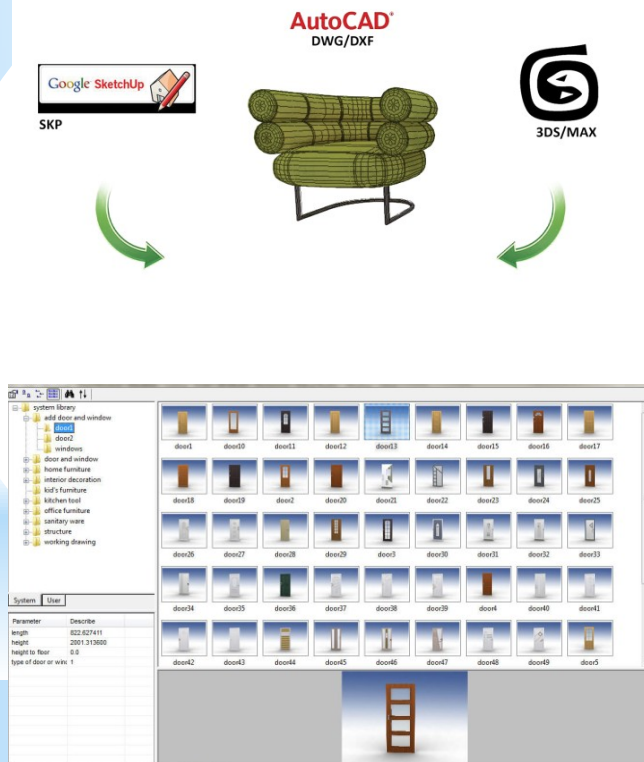
- \* Stand-alone version of BtoCAD
- \* Compatible with Sketchup/AutoCAD/ 3DMax
- \* Massive model library
- \* Shortcuts specialized for interior design





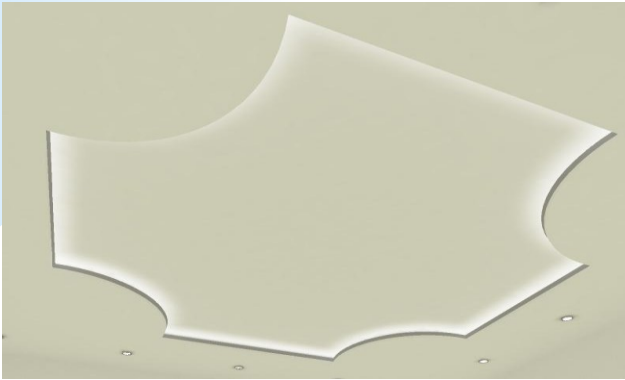
# Modeling

- \* Stand-alone version of BtoCAD
- \* Compatible with Sketchup/AutoCAD/ 3DMax
- \* Massive model library
- \* Shortcuts specialized for interior design



# Modeling

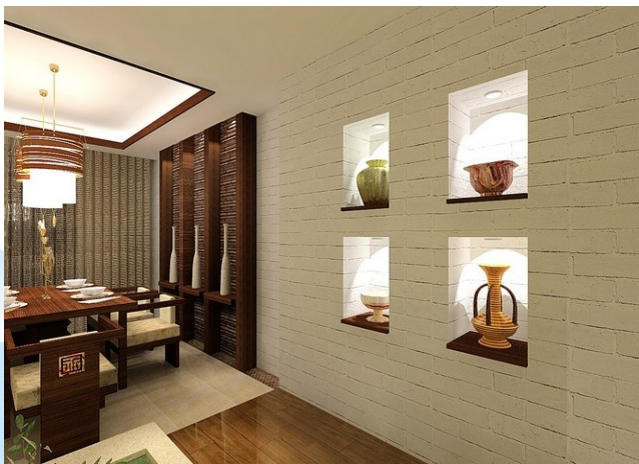
## 1. Ceiling Block



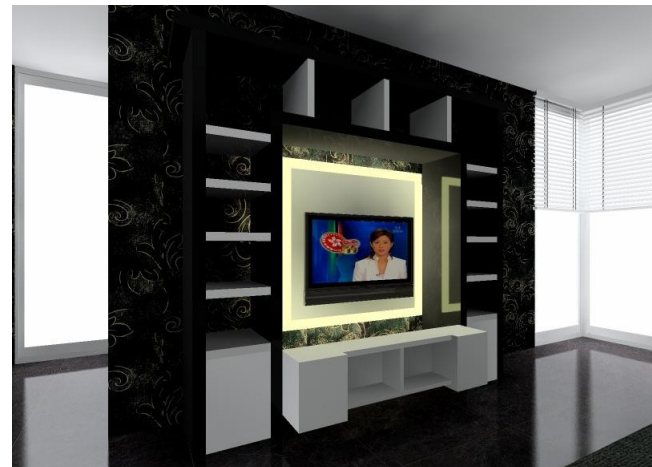
## 3. Leather Elevation



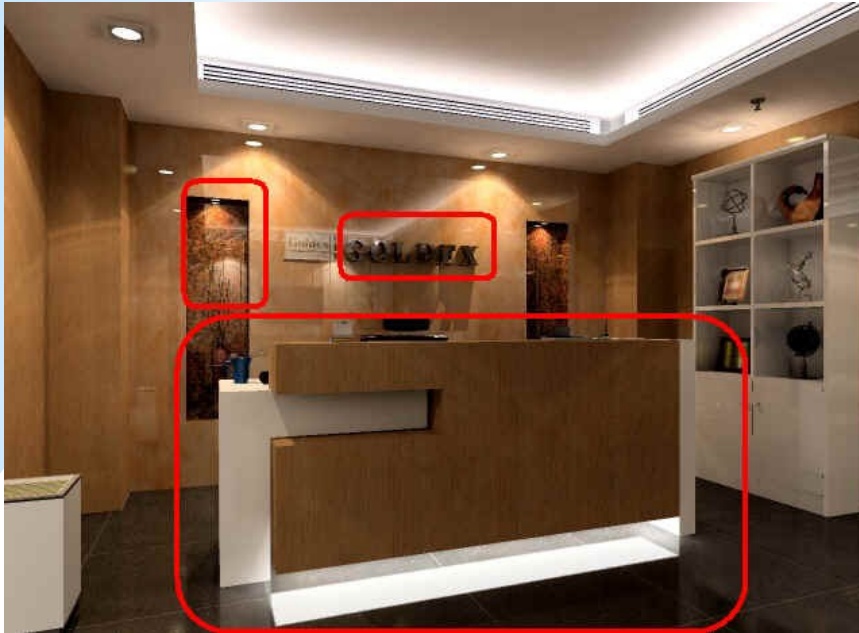
## 2. Wall Hole



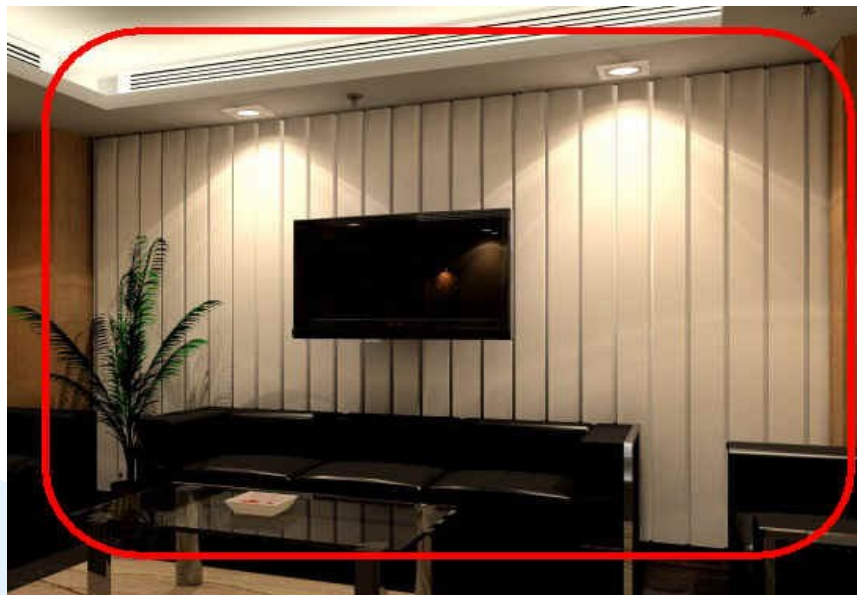
## 4. Panel Elevation



# Modeling



1. Wall Hole
2. 3D Fonts
3. Reception



4. Wall Elevation



# Flat Panel Design

- Flexible design
- Real-time effect
- Detailed-oriented



## 3D Render



# Kitchen Design

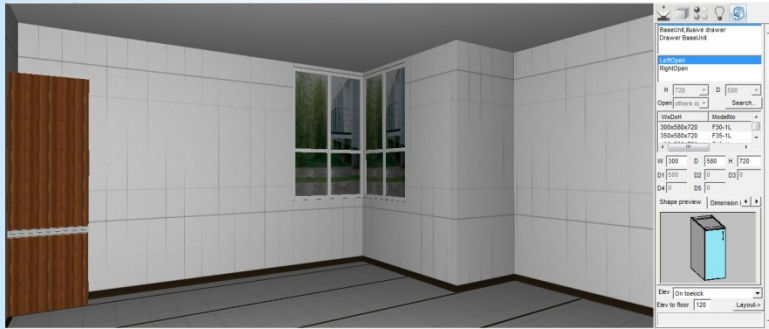
- Flexible design
- Real-time effect
- Detailed-oriented



## 3D Render

# Kitchen Design

- Flexible design
- Real-time effect
- Detailed-oriented



# Tiling Design

- Flexible Tile Database
- Various tiling methods
- Auto Quotation

## Quotation

ADD: Globe Tiles & Sanitary Ware Dr. Ziauddin Ahmed Road, Cycle Market, Karachi-Pakistan

Tel: +92 333-3503218

Fax: +92 21-32628850

Custom: Saud Younus

Tel:

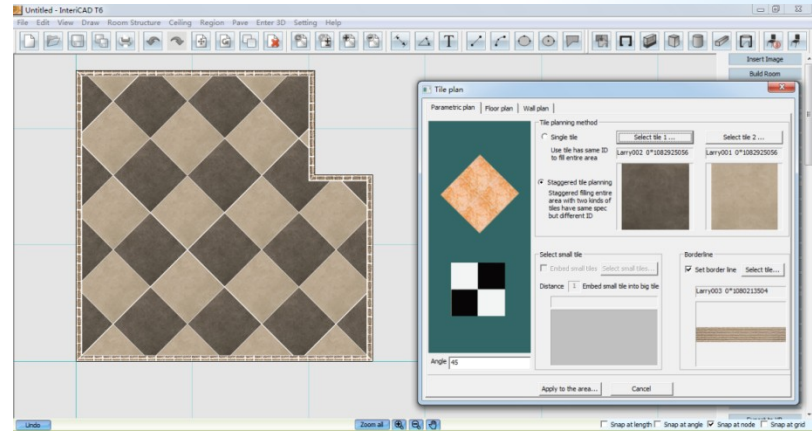
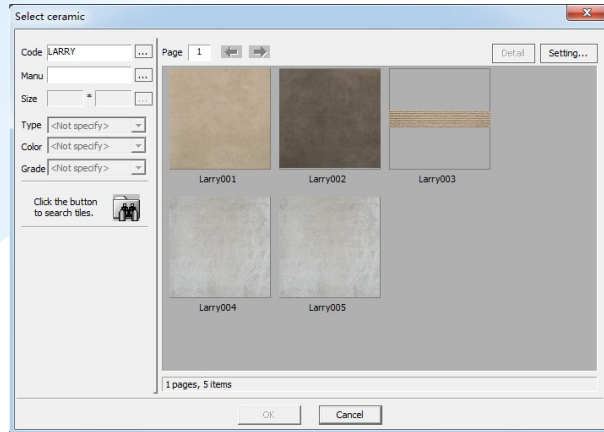
Index	Code	Size	Class	Price	Count	Total
1	YFE45006	450*450	Quality	23.00	32	736.00
2	YFE45011	450*450	Quality	30.00	31	930.00
3	YFE45004	450*450	Quality	12.00	45	540.00
4	YFX018	300*450	Quality	46.00	158	7268.00
5	YFX017	300*100	Quality	33.00	64	2112.00
		300*450	Quality	28.00	212	5936.00
						17822.00



## 3D Render



# Tiling Design



- Flexible Tile Database
- Various tiling methods
- Auto Quotation





# Material

1. Built-in Material (over 10,000)

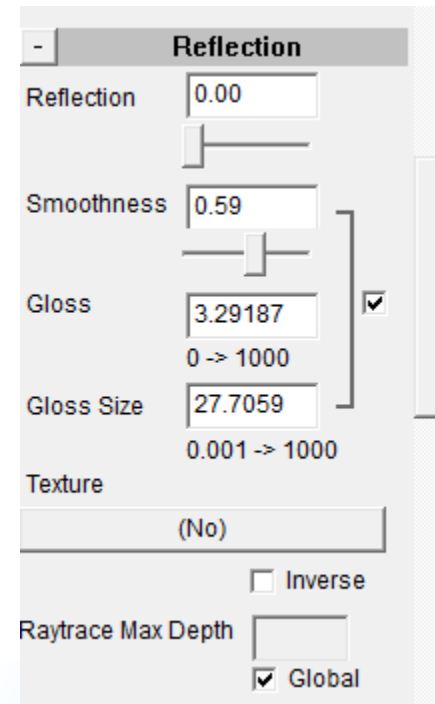
2. Self-define Material Editor

3. A. Scanner

B. Camera

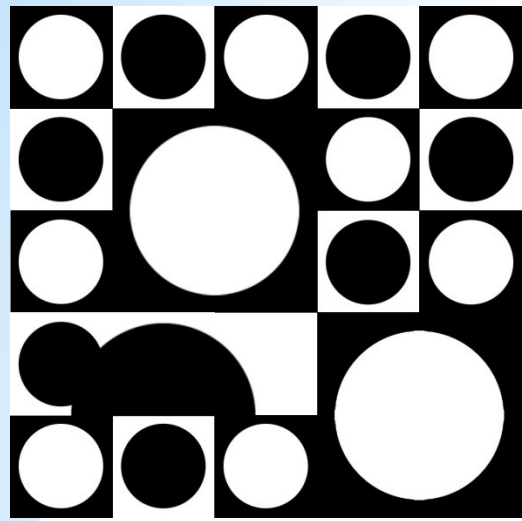
C. Internet

JPEG

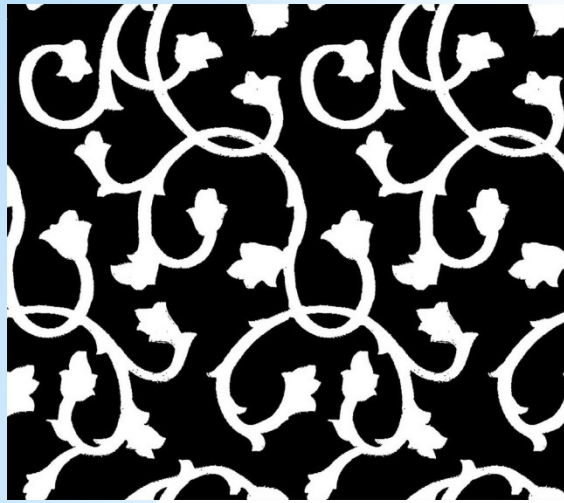








**Material Effect**



**Material Effect**



**Thank you!**